

EDGECORE WEB-SMART PRO ECS2100 SERIES READY FOR ALL YOUR NEEDS



Enable Your Office Networks Smart and Pro

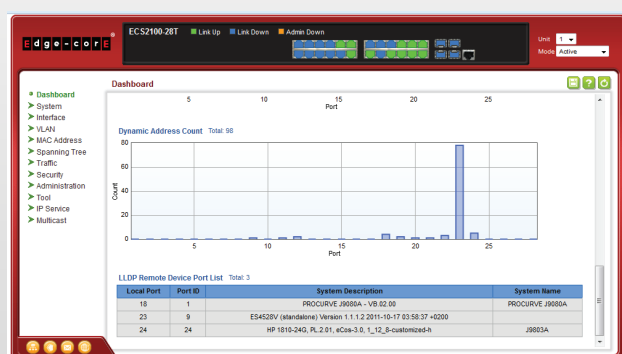
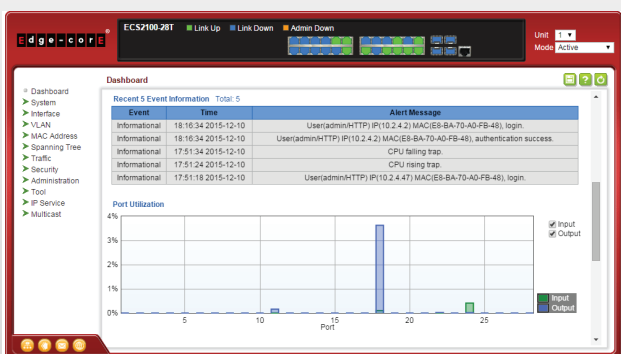
Edgecore Networks new Web-Smart Pro product family, ECS2100 series, with both Power-over-Ethernet (PoE) and non-PoE products from 10-ports to 52-ports, designed to deliver smart office networks for big & small network.

With its ease-of-use web interface, IT managers or even non-IT persons can quickly and easily set up an office network. Considering the network distribution requirements in an office, the Web-Smart Pro product family provides PoE and fan-less operation in a compact size, enabling a network to be deployed easily and without any noise. In addition, the whole product family includes console port access, allowing IT managers of larger networks to easily manage a remote office in various ways - CLI/SNMP/Web.

The ECS2100 Web-Smart Pro offers a flexible and cost-effective design for an existing office network to upgrade to IPv6. As to the importance of energy saving, the ECS2100 product family conforms to the Energy Efficiency Ethernet standard (802.3az) for low power consumption and Green-Ethernet. The PoE product family also offers a PoE timer function that lets users schedule to power on PoE devices per working time to save power and costs.

Dashboard

The ECS2100 Series provides a fantastic feature called "Dashboard". It provides the several useful current switch status, like CPU, Port utilization and Event & traffic status and so on. With that useful information, users could quickly understand the switch status and do troubleshoot



Features and Benefit:



Scalability for Big & Small Network

- ECS2100 series offer a range of web-smart switches design for SMB market, deployed in different target network topologies, from **small to large** - 10 port, 28-port and 52-port with integrated 2 or 4 Gigabit SFP.
- ECS2100 series support the new **IEEE802.3az** and **Green Ethernet**, using **Energy Efficient Ethernet** standard automatically decrease power usage when network traffic is low.
- The product series support **L3 static routing** to group different network segment and increase user flexibility.
- Compact **ECS2100-10PE** come with wall-mountable **PoE, fanless, and external power** design with 65W to help you easily set up a small/branch office.



Complete PoE Product Line

- Different port count, combining with **different PoE power budget** (65W, 125W, 200W & 370W) meet different application requirement.
- Full-range PoE (**802.3af & 802.3at**) product series give office users flexibly deploy VoIP, surveillance, and Wi-Fi Aps.
- Compact POE plus fan-less design help small offices quick set up wireless network with no noise. (**ECS2100-10PE & ECS2100-10P**)
- **Advanced PoE Timer** saves your money and reduces energy wastes, via PoE scheduling for different application



Smart IT Network in Edgecore

- **Diag LEDs** helps you understand the switch status from the self-check when the switch boots.
- **Dashboard** gives you simply understand the network status from the graphic analytics. IT manager can understand the CPU utilization, memory status at one glance.
- **Multiple Network Management** and **console port option** give IT managers flexibility and multiple management access via CLI, Web, SNMP v1/v2c/v3, and Telnet.
- **Dual Firmware/Configuration** provides redundancy and security to users.
- **Cable Diagnostics** simply the network trouble shooting via real-time cable status checking

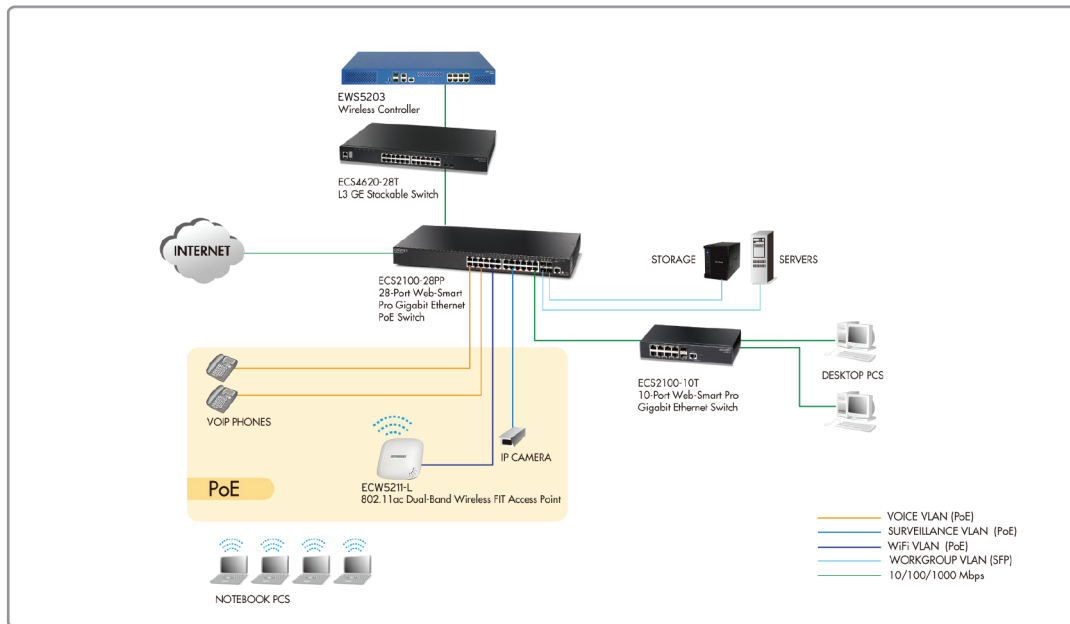


Comprehensive QoS and Enhanced Security

- **8 hardware queues, port-based QoS** (IPv4/IPv6 DSCP), and **DiffServ** provide optimal real-time services.
- **DDOS protection** avoids hacker attacks on networks.
- **Auto Voice** and **Surveillance VLANs** provide VoIP and IP cameras the optimum network traffic usage.
- Enhanced Security support multiple security features, such as **ACLs, storm control, 802.1X, port security, MAC filters, IP source guard, and AAA.**

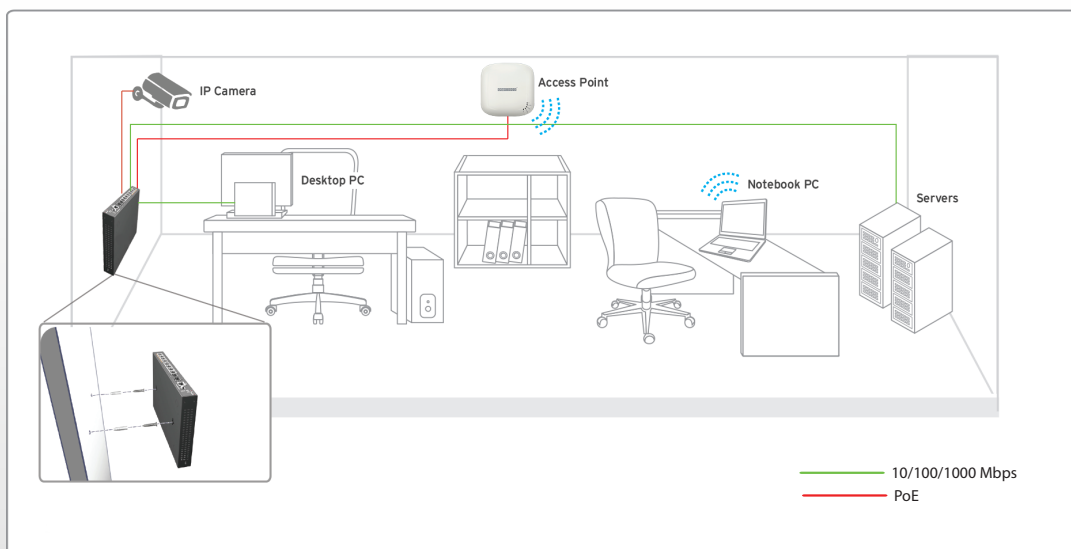
Network Application

Application (I) Medium-size Business Office



1. The ECS2100-28PP PoE Switches support IEEE 802.3af & 802.3at for your VoIP, IP-Camera and 802.11ac Wi-Fi device.
2. The ECS2100-28PP can provide no-PoE / PoE / SFP solution for different network deployment.

Application (II) Small-size Business Office



1. Fan-less, compact wall-mountable design.
2. Easily deployed in small office with its height as 2.65 cm, special design for thin space.
3. IEEE 802.3af/az, 65W PoE power budget with external power.

EDGECORE WEB-SMART PRO ECS2100 SERIES

Console, IPv4/IPv6, Enhanced Security, QoS, L3 static routing, PoE timer



WEB-SMART PRO PoE SWITCHES



Model Number	ECS2100-10PE	ECS2100-10P	ECS2100-28P	ECS2100-28PP
Ports				
Fixed Ports	8 x 10/100/1000 Base-T +2 x SFP uplink ports (8 x PoE ports)	8 x 10/100/1000 Base-T +2 x SFP uplink ports (8 x PoE ports)	24 x 10/100/1000 Base-T +4 x SFP uplink ports (24 x PoE ports)	24 x 10/100/1000 Base-T +4 x SFP uplink ports (24 x PoE ports)
Panel	RJ45 Console Port, PoE Switch Button, Power /PoE Max LED, Diag LED, Reset/ Factory Default			
Physical Configuration				
Form Factor	Wallmount	Rackmount	Rackmount	Rackmount
Flash Memory	32MB	32MB	32MB	32MB
SDRAM for CPU	256MB	256MB	256MB	256MB
Packet Buffer	4.1Mbits	4.1Mbits	4.1Mbits	4.1Mbits
Performance				
MAC Table	8K	8K	8K	8K
Switching Capability	20 Gbps	20 Gbps	56 Gbps	56 Gbps
Forwarding Rate	14.9Mpps	14.9Mpps	41.7Mpps	41.7Mpps
Environment				
Fan/Fanless	Fanless	Fanless	Fan	Fan
Surge Protection	2KV(Power)	2KV(Power)	2KV(Power)	2KV(Power)
Temperature Range	0°C to 50°C	0°C to 40°C	0°C to 50°C	0°C to 45°C (370W)
802.3af/at	802.3af/at	802.3af/at	802.3af/at	802.3af/at
PoE	65W	125W	200W	370W
Heat Dissipation	272.966 (Btu/H)	545.933 (Btu/H)	887.141 (Btu/H)	1678.743 (Btu/H)
Internal /External power	External 54V, 1.67A	Internal	Internal	Internal
Dimension				
(WxDxH) cm	24*15.5*2.65cm	44*17.3*4.4cm	44*22*4.4cm	44*22*4.4cm
Weight	.973 kg (2.15 lb)	2.4 kg (5.34 lb)	2.8 kg (6.18 lb)	3.1 kg (6.85 lb)
Certification				
Certification	CE Class A, FCC, VCCI Class A, cUL, CB, BSMI			
L2 Features				
QinQ/mDNS/Software Stacking	YES	YES	YES	YES
Spanning Tree	802.1D STP, 802.1s MSTP, 802.1w RSTP, Loopback Detection, BPDU Filter/Guard, BPDU Forward, Root Guard			
VLAN	VLAN	802.1Q VLAN, Port Based, MAC-Based, Protocol-Based, Guest VLAN, Auto Voice VLAN		
	VLAN Numver	4K	4K	4K
	VID Number	1-4K	1-4K	1-4K
Link Aggregation	Static Trunk, IEEE 802.3ad LACP			
IGMP	Snooping V1/V2/V3, IGMP Filtering/Throtting, IGMP Queries, Immediate Leave, MLD Snooping			
Jumbo Frame Support	YES, 10K	YES, 10K	YES, 10K	YES, 10K
QoS Features				
Rate Limiting	YES	YES	YES	YES
Priority Queues Scheduling	WRR, Strict Priority, Hybrid			
QoS	IPv4 / IPv6 DSCP, DiffServ, Auto VoIP			
Port-based QoS	YES (per system)	YES (per system)	YES (per system)	YES (per system)
HW Queues	YES, 8 queues	YES, 8 queues	YES, 8 queues	YES, 8 queues
Security Features				
Security	DDOS protection, CPU Guard (CPU Protection), Port Isolation, Port Mirroring (Ingress, Egress), Port Security, MAC Authentication, MAC Filter, Port max count per port, Dynamic VLAN Assigement, Dynamic ARP Inspection, Remote Mirror (RSPAN), IEEE 802.1X			
sFlow	Ingress only			
Storm Control (Broadcast/Multicast/Unknown Unic)	Broadcast/Multicast /Unknown Unicast	Broadcast/Multicast /Unknown Unicast	Broadcast/Multicast /Unknown Unicast	Broadcast/Multicast /Unknown Unicast
ACL	Ingress, ACL with 512 entries, ACL L2/L3/L4, ACL IPv4/IPv6, TCP/UDP-Based ACL, MAC-Based ACL			
AAA	RADIUS, TACACS+			
IP Source Guard	YES	YES	YES	YES
SSHv1.5/v2.0	YES, SSHv2	YES, SSHv2	YES, SSHv2	YES, SSHv2
SSL	SSL, SSL v3, SSL IPv4/IPv6			
PoE				
PoE Timer	YES	YES	YES	YES
Network Discovery				
LLDP (802.1ab)	LLDP, LLDP-MED			
Management				
Management	System password protection, NTP, SNTP, Dashboard, Dual Firmware/Configuration, Save Button, Auto Firmware Upgrade, Configuration Upload/Download, Memory & Flash Log, Event/Error Log/Syslog, Dynamic Provision (via Option 66,67), DNS Client without DNS proxy, Cable Diag Nostic.			
Firmware Download/Upgrade & Configuration Upload/Download	TFTP (RFC783), FTP, HTTP, SFTP			
RMON	RMON (groups 1, 2, 3 and 9)			
SNMP	SNMP Trap, SNMP v1/v2c/v3			
MIB	Standard MIB, Private MIB			
Management Access	SNMP, Console, WEB, Telnet			
DHCP	DHCP	v4/v6 Client, Option 66/67, Option 82, Snooping		
	v4/v6 Relay	Support	Support	Support
IPv4 Routing				
Static Routing	YES	YES	YES	YES
IPV6 Features				
IPV6 Features	IPV4/IPV6 Dual Protocol Stack, HTTP over IPv6, SNMP over IPv6			
IPV6 Management	IPV6 Ping/tracert, IPV6 Telnet, IPV6 Syslog, IPV6 TFTP			
EEE Features				
EEE	802.3az (10M doesn't support), Cable Length, No Link Power-Saving			
Support ecCLOUD		YES	YES	YES

EDGECORE WEB-SMART PRO ECS2100 SERIES

Dashboard, Console Port, Dual Firmware/Configure, IPv4&IPv6, L3 Static Routing



WEB-SMART PRO Non- PoE SWITCHES



Model Number	ECS2100-10T	ECS2100-28T	ECS2100-52T
Ports			
Fixed Ports	8 x 10/100/1000 Base-T +2 x SFP uplink ports	24 x 10/100/1000 Base-T +4 x SFP uplink ports	48 x 10/100/1000 Base-T +4 x SFP uplink ports
Panel	RJ45 Console Port, Power /PoE Max LED, Diag LED, Reset/ Factory Default		
Physical Configuration			
Form Factor	Rackmount	Rackmount	Rackmount
Flash Memory	32MB	32MB	32MB
SDRAM for CPU	256MB	256MB	256MB
Packet Buffer	4.1Mbits	4.1Mbits	12Mbits
Performance			
MAC Table	8K	8K	16K
Switching Capability	20 Gbps	56 Gbps	104 Gbps
Forwarding Rate	14.9Mpps	41.7Mpps	77.4Mpps
Environment			
Fan/Fanless	Fanless	Fanless	Fan
Surge Protection	2KV(Power)	2KV(Power)	2KV (Power)
Temperature Range	0°C to 50°C	0°C to 50°C	0°C to 50°C
Heat Dissipation	27.297 (Btu/H)	68.242 (Btu/H)	136.48 (Btu/H)
Internal / External power	Internal	Internal	Internal
Dimension			
(WxDxH) cm	19*11*3.6cm	44*22*4.4cm	44*22*4.4cm
Weight	.816 kg (1.81 lb)	2.2 kg (4.86 lb)	2.5 kg (5.51 lb)
Certification			
Certification	CE Class A, FCC, VCCI Class A, cUL, CB, BSMI		
L2 Features			
QinQ/mDNS/Software Stacking	YES	YES	YES
Spanning Tree	802.1D STP, 802.1s MSTP,802.1w RSTP,Loopback Detection,BPDU Filter/Guard,BPDU Forward,Root Guard		
VLAN	VLAN	802.1Q VLAN, Port Based, MAC-Based, Protocol-Based, Guest VLAN,Auto Voice VLAN	
	VLAN Numver	4K	4K
	VID Number	1-4K	1-4K
Link Aggregation	Static Trunk, IEEE 802.3ad LACP		
IGMP	Snooping V1/V2/V3, IGMP Filtering/Throtting, IGMP Queries, Immediate Leave, MLD Snooping		
Jumbo Frame Support	YES,10K	YES,10K	YES,10K
QoS Features			
Rate Limiting	YES	YES	YES
Priority Queueues Scheduling	WRR, Strict Priority, Hybrid		
QoS	QoS	IPv4 / IPv6 DSCP,DiffServ,Auto VoIP	
	Port-based QoS	YES (per system)	YES (per system)
	HW Queueues	YES, 8 queuees	YES, 8 queuees
Security Features			
Security	DDOS protection,CPU Guard (CPU Protection),Port Isolation,Port Mirroring (Ingress, Egress),Port Security, MAC Authentication,MAC Filter,Port max count per port,Dynamic VLAN Assigement, Dynamic ARP Inspection,Remote Mirror (RSPAN),IEEE 802.1X		
sFlow	Ingress only	Ingress only	YES
Storm Control (Broadcast/Multicast/Unknown_Unicast)	Broadcast/Multicast /Unknown_Unicast	Broadcast/Multicast /Unknown_Unicast	Broadcast/Multicast /Unknown_Unicast
ACL	Ingress, ACL with 512 entries, ACL L2/L3/L4, ACL IPv4/IPv6, TCP/UDP-Based ACL, MAC-Based ACL		
AAA	RADIUS, TACACS+		
IP Source Guard	YES	YES	YES
SSHv1.5/v2.0	YES, SSHv2	YES, SSHv2	YES, SSHv2
SSL	SSL,SSL v3, SSL IPv4/IPv6		
Network Discovery			
LLDP (802.1ab)	LLDP,LLDP-MED		
Management			
Management	System password protection,NTP,SNTP,Dashboard,Daul Firmware/Configuration,Save Button,Auto Firmware Upgrade, Configuration Upload/Download. Memory & Flash Log.Event/Error Log/Syslog, Dynamic Provision (via Option 66,67), DNS Client without DNS proxy, Cable Diag Nostic.		
Firmware Download/Upgrade &Configuration Upload/Download	TFTP (RFC783),FTP,HTTP, SFTP		
RMON	RMON (groups 1, 2, 3 and 9)		
SNMP	SNMP Trap, SNMP v1/v2c/v3		
MIB	Standard MIB, Private MIB		
Management Access	SNMP, Console, WEB, Telnet		
DHCP	DHCP	v4/v6 Client, Option 66/67, Option 82, Snooping	
	v4/ v6 Relay	Support	Support
IPv4 Routing			
Static Routing	YES	YES	YES
IPv6 Features			
IPv6 Features	IPv4/IPv6 Dual Protocol Stack, HTTP over IPv6,SNMP over IPv6		
IPv6 Management	IPv6 Ping/tracert, IPv6 Telnet, IPv6 Syslog, IPv6 TFTP		
EEE Features			
EEE	802.3az (10M doesn't support), Cable Length, No Link Power-Saving		
Support ecCLOUD	YES	YES	YES

Additional information
Email: sales@edge-core.com
Tel: +886-3-563-8888

© 2022 Edgecore Networks Corporation. All rights reserved.
 The information contained herein is subject to change without notice. This document is for informational purposes only and does not set forth any warranty, expressed or implied, concerning any equipment, equipment feature, or service offered by Edgecore Networks Corporation. Edgecore Networks Corporation shall not be liable for technical or editorial errors or omissions contained herein. Edgecore Networks reserves the right to amend, suspend or cancel these terms and conditions without notice.